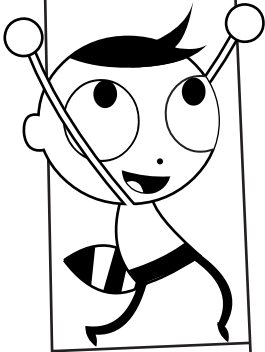


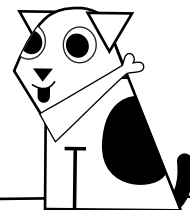
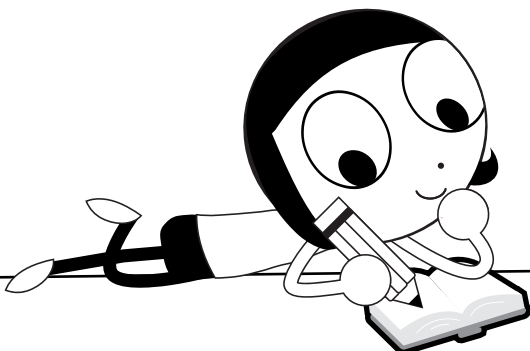
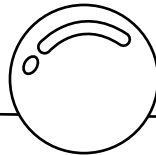
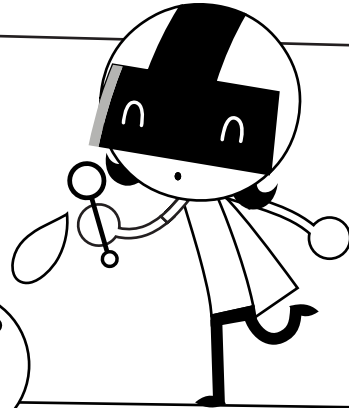


Learn at Home with PBS KIDS



Celebrating Winter

BINGO





Learn at Home with PBS KIDS

**Week of
December 7th**

Hello, Families!

Welcome to **Learn Along Bingo!** We're happy to share PBS KIDS activities with you and to work with PBS member stations and community partners across the country to help support learning at home. With Learn Along Bingo, children can view, explore, and play as they learn alongside their PBS KIDS friends on the PBS KIDS 24/7 channel. We hope your family will use it to inspire learning each and every day.

It's Celebrating Winter Week!

In this packet, there are printable activities and everyday learning ideas for you and your child to choose from. As you complete each square, mark it off to celebrate the learning.

Learning Spotlight: Identifying Behavioral Changes in the Winter

This week, we're learning how identifying behavioral changes in the winter helps us to see how animals (including humans) change during different seasons to adapt to the environment and survive.

Show What You Know: What to Wear Where I Live Activity

The last activity in this packet is a perfect way for children to share how they adapt to the weather and changing seasons.

Tune in: Watch ELINOR WONDERS WHY at 3:30pm ET on Tuesday, December 8th on the PBS KIDS 24/7 channel.

Ready for more? Watch your favorite PBS KIDS shows on the 24/7 channel and live stream at pbskids.org/video/livetv or on your local PBS station.

Happy learning!
PBS KIDS



Find free activities, articles and tips to support at-home learning on pbskidsforparents.org

PBS KIDS and the PBS KIDS Logo are registered trademarks of Public Broadcasting Service. Used with permission.

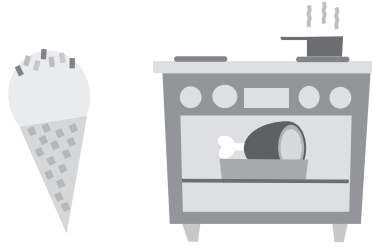


Celebrating Winter

BINGO



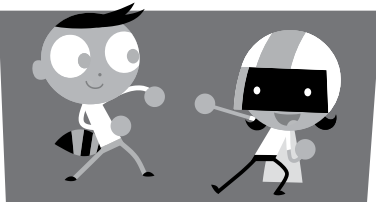
What I Wear Outdoors



Find something in your home that is hot and something that is cold.



What to Wear in Russia



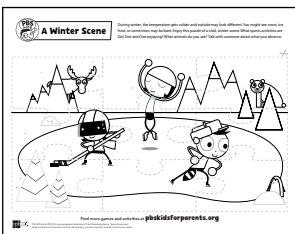
Do "The Freeze" dance. Dance when the music plays and stop when the music stops.



What To Wear Where I Live



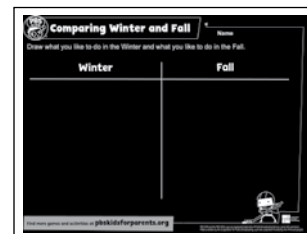
Fill an ice tray with water and add drops of food coloring. Freeze and then paint a picture!



A Winter Scene



Look outside a window and describe the weather to someone.



Comparing Winter and Fall

PreK-K

Find more games and activities at pbs.org/parents/learn-at-home



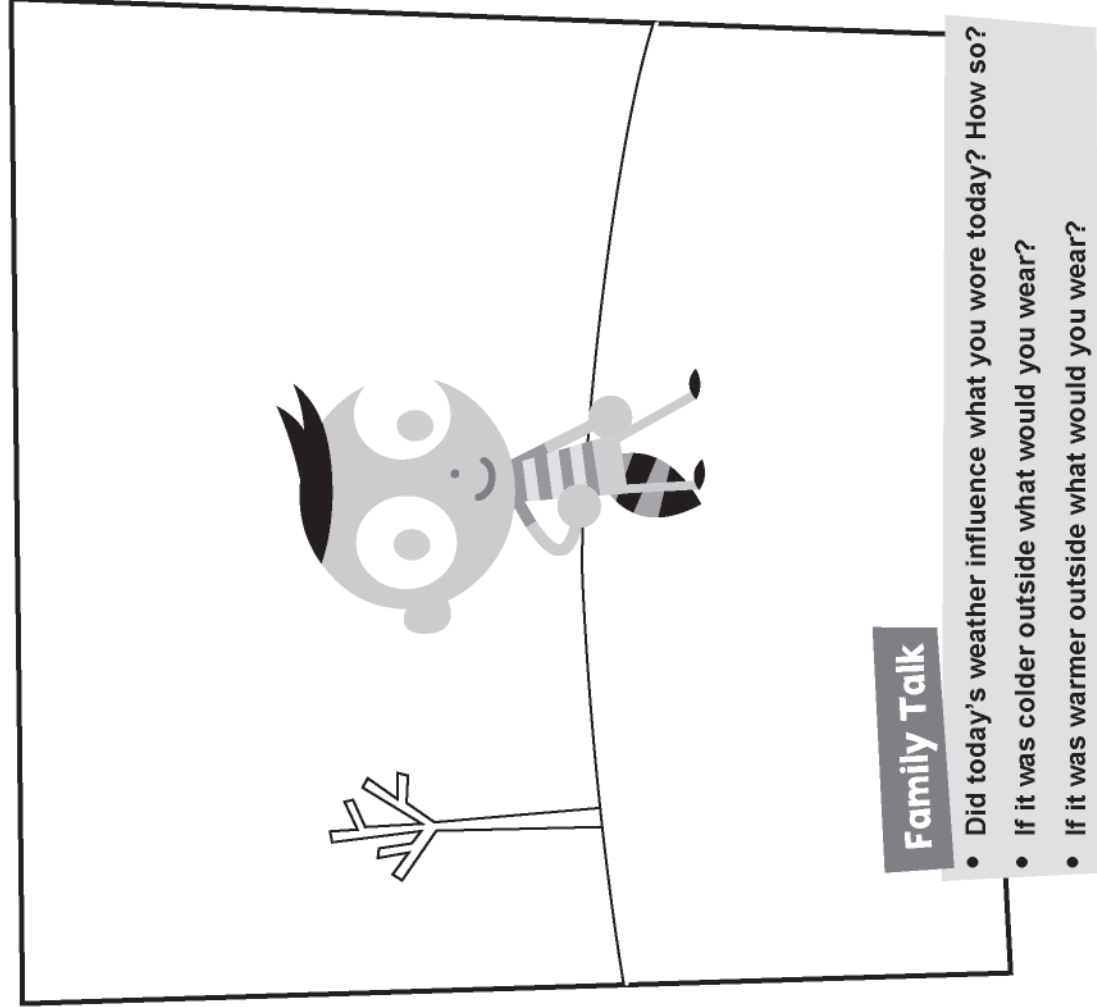
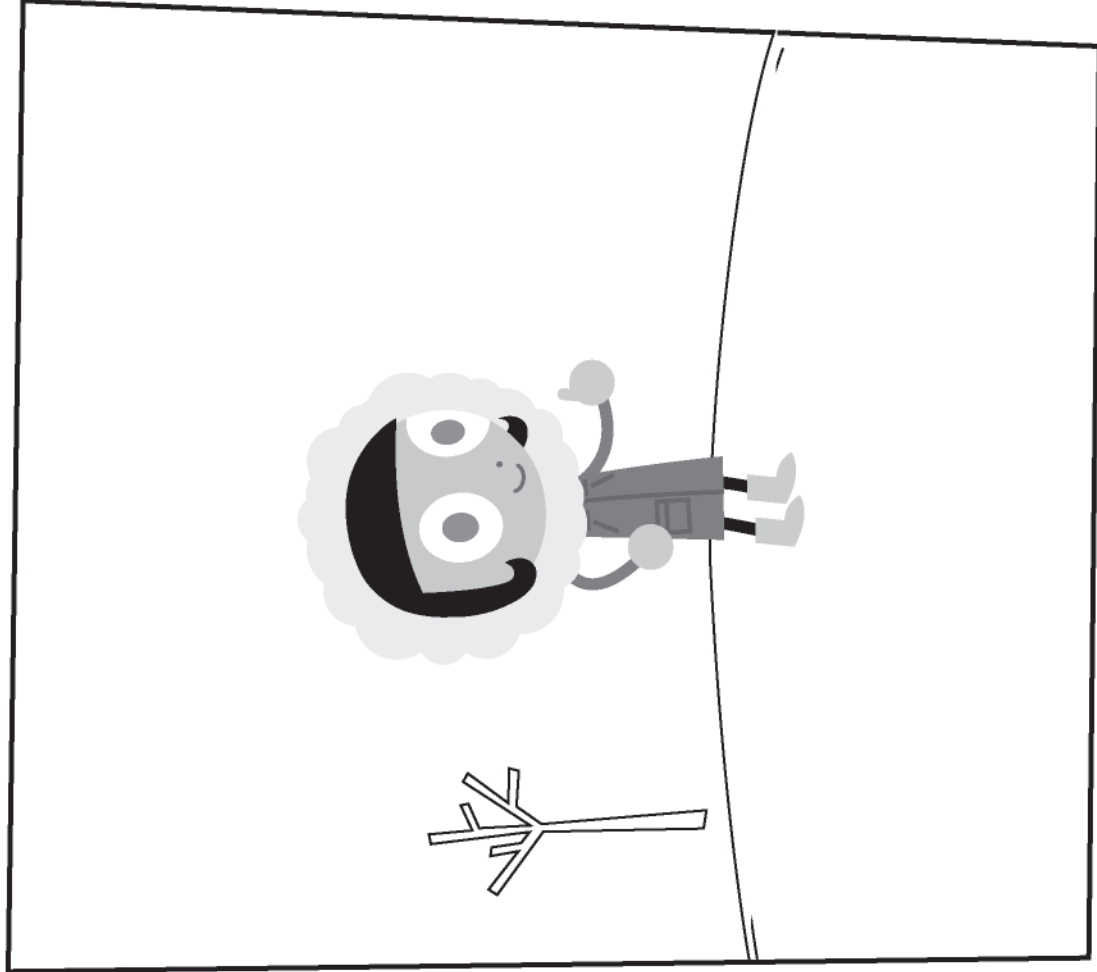
PBS KIDS and the PBS KIDS Logo are registered trademarks of Public Broadcasting Service. Used with permission. Made available by the Corporation for Public Broadcasting, a private corporation funded by the American people.



What I Wear Outdoors

Name _____

Draw an outside scene to match what each character is wearing.



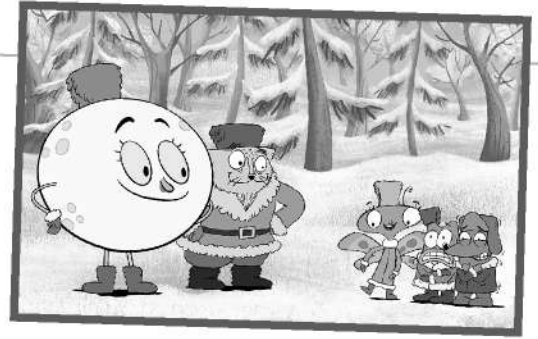
Family Talk

- Did today's weather influence what you wore today? How so?
- If it was colder outside what would you wear?
- If it was warmer outside what would you wear?

Find more games and activities at pbskidsforparents.org

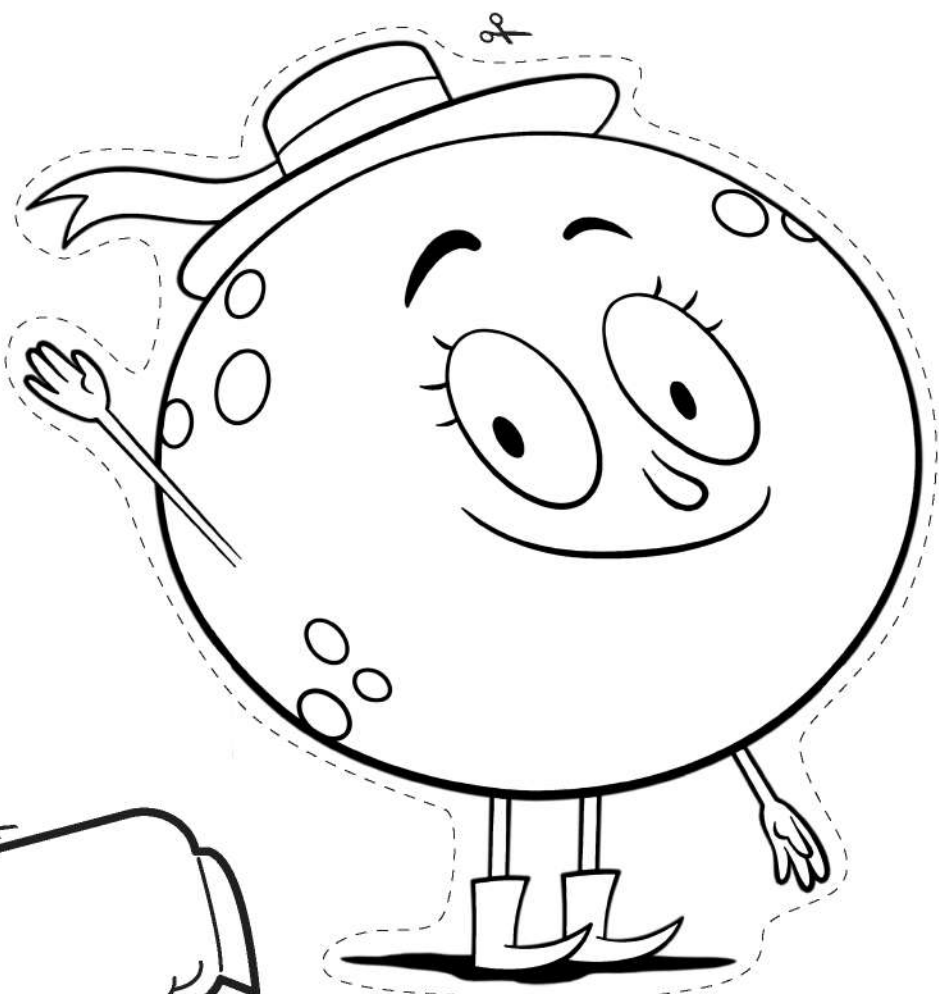


Let's Go LUNA!

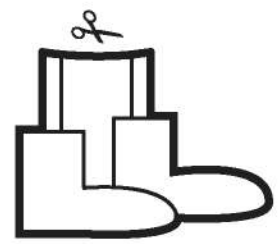
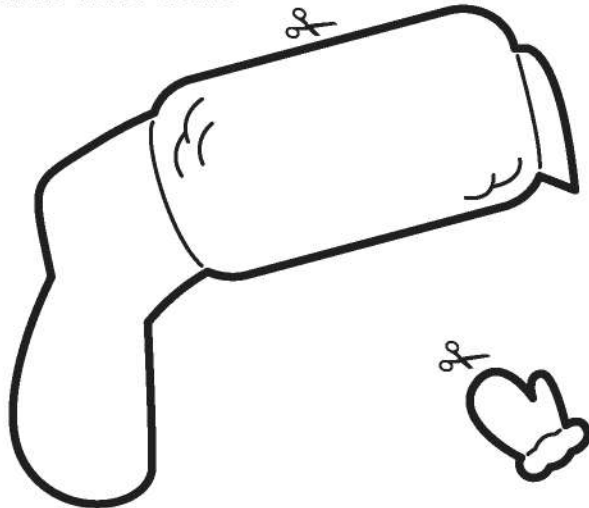


Russian Clothes and Luna Characters

1. Color the characters in their winter clothes.
2. Cut out the character on the dashed line. Cut out the clothes on the thick black line.
3. Glue the winter clothes onto the character.
4. Glue the character onto the "Winter in Russia" side of the **What to Wear in Winter Handout**.



Luna's Winter Clothes



Luna

Sponsored by:

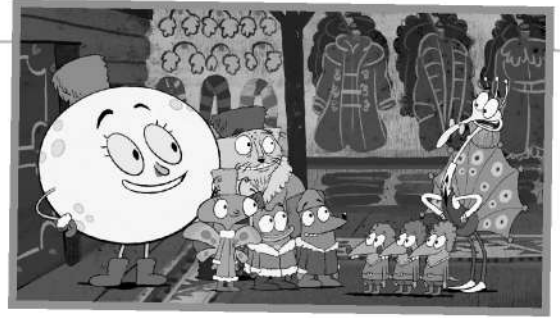


LET'S GO LUNA! © 2018 LATW Productions Inc. PBS KIDS and the PBS KIDS Logo are registered trademarks of Public Broadcasting Service. Used with permission. Corporate Funding for LET'S GO LUNA! is provided by Target. Made available by the Corporation for Public Broadcasting, a private corporation funded by the American people.

For more games and activities, visit pbskidsforparents.org

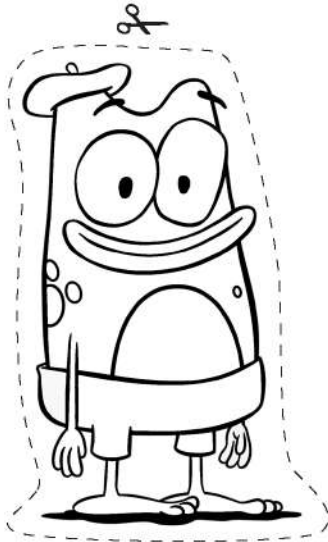


Let's Go LUNA!

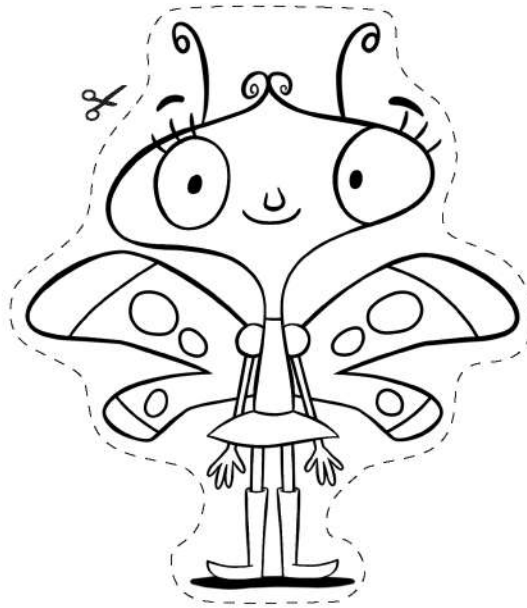


Russian Clothes and Luna Characters

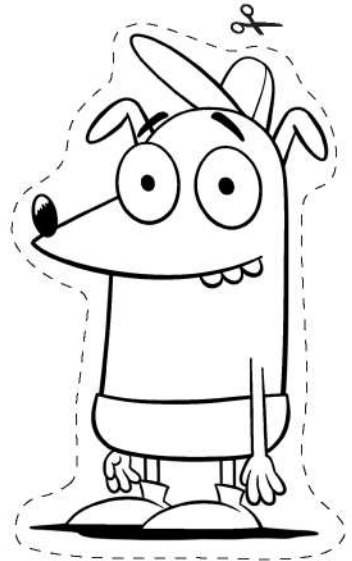
1. Color the characters in their winter clothes.
2. Cut out the character on the dashed line. Cut out the clothes on the thick black line.
3. Glue the winter clothes onto the character.
4. Glue the character onto the "Winter in Russia" side of the **What to Wear in Winter Handout**.



Leo

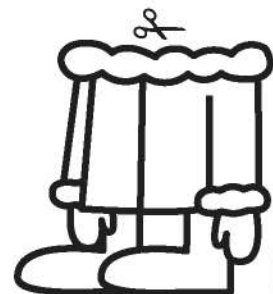
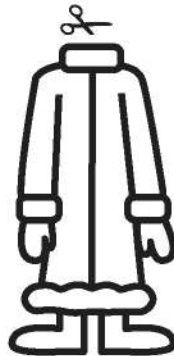
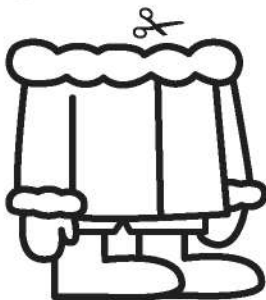
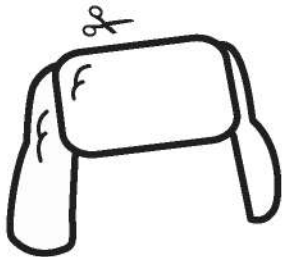


Carmen



Andy

Winter clothes



Sponsored by:



LET'S GO LUNA! © 2018 LATW Productions Inc. PBS KIDS and the PBS KIDS Logo are registered trademarks of Public Broadcasting Service. Used with permission. Corporate Funding for LET'S GO LUNA! is provided by Target. Made available by the Corporation for Public Broadcasting, a private corporation funded by the American people.

For more games and activities, visit pbskidsforparents.org



Let's Go
LUNA!



What to Wear in Winter

Winter in Russia

Glue the characters wearing their winter clothes here.

Sponsored by:



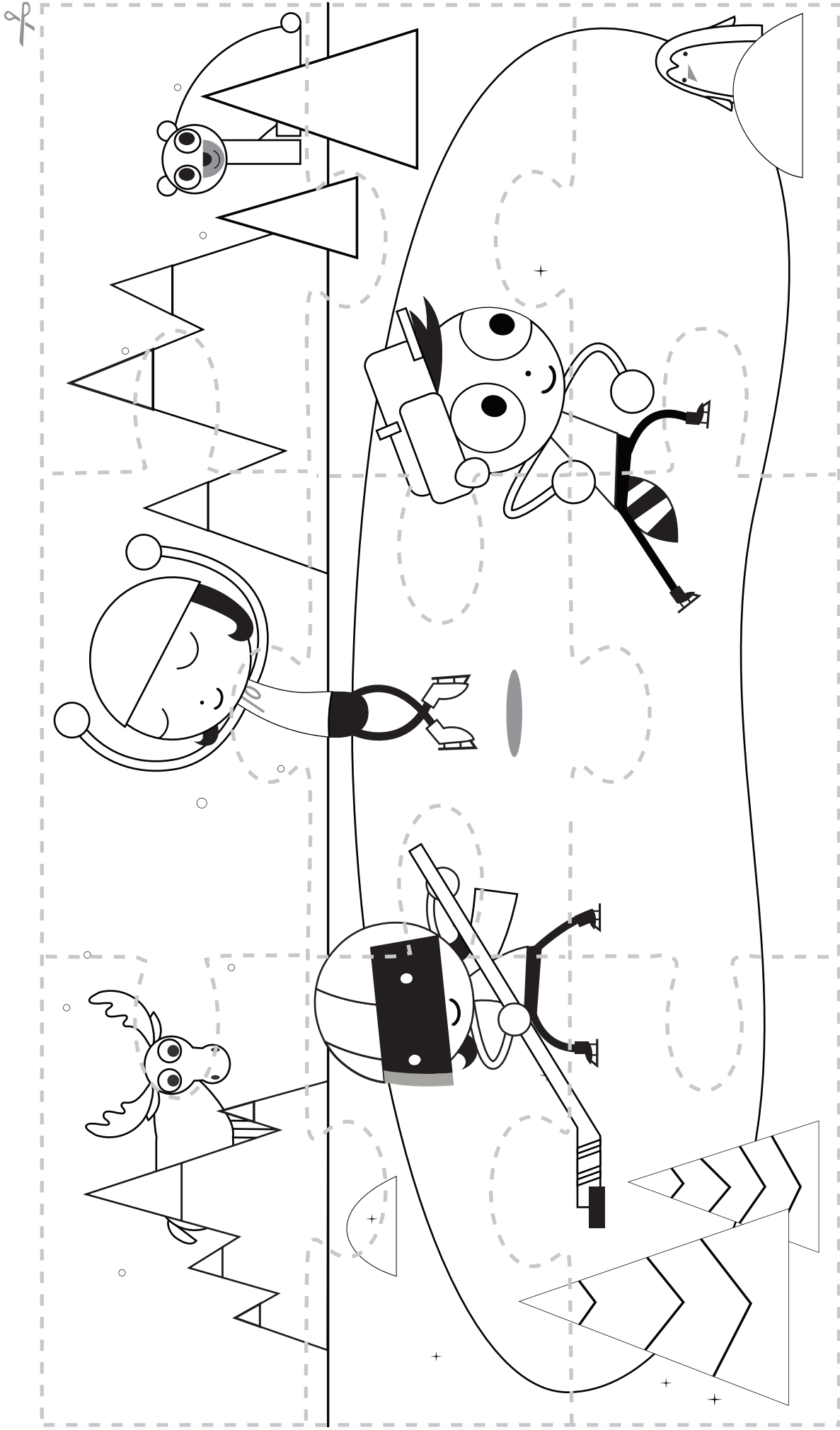
LET'S GO LUNA! © 2018 LATW Productions Inc. PBS KIDS and the PBS KIDS Logo are registered trademarks of Public Broadcasting Service. Used with permission. Corporate Funding for LET'S GO LUNA! is provided by Target. Made available by the Corporation for Public Broadcasting, a private corporation funded by the American people.

For more games and activities, visit pbskidsforparents.org



A Winter Scene

During winter, the temperature gets colder and outside may look different. You might see snow, ice, frost, or some trees may be bare. Enjoy this puzzle of a cold, winter scene. What sports activities are Del, Dot and Dee enjoying? What animals do you see? Talk with someone about what you observe.



Find more games and activities at pbskidsforparents.org



PBS KIDS and the PBS KIDS Logo are registered trademarks of Public Broadcasting Service. Used with permission. Made available by the Corporation for Public Broadcasting, a private corporation funded by the American people.



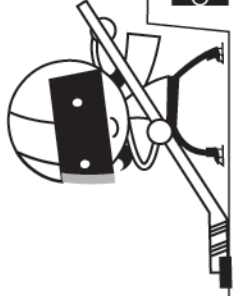
Comparing Winter and Fall

Name _____

Draw what you like to do in the Winter and what you like to do in the Fall.

Winter

Fall

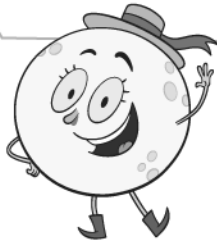


Find more games and activities at pbskidsforparents.org

PBS KIDS and the PBS KIDS Logo are registered trademarks of Public Broadcasting Service. Used with permission. Made available by the Corporation for Public Broadcasting, a private corporation funded by the American people.



Let's Go
LUNA!



What to Wear in Winter

Winter Where I Live

Draw a picture of yourself wearing the clothes you would wear to go outside in winter.

Sponsored by:



LET'S GO LUNA! © 2018 LATW Productions Inc. PBS KIDS and the PBS KIDS Logo are registered trademarks of Public Broadcasting Service. Used with permission. Corporate Funding for LET'S GO LUNA! is provided by Target. Made available by the Corporation for Public Broadcasting, a private corporation funded by the American people.

For more games and activities, visit pbskidsforparents.org



Learn at Home with PBS KIDS

Schedule Begins October 5, 2020

Explore reading, math, science, life lessons, and more on the PBS KIDS 24/7 channel and live stream! The TV schedule below offers you and your child a chance to learn anytime alongside your favorite PBS KIDS characters.



TIME (M-F)	SHOW	GRADE	LEARNING GOAL
6/5c am	Splash and Bubbles	PK-K	Science
6:30/5:30c am	WordWorld	PK-K	Literacy
7/6c am	Peg + Cat	PK-K	Math
7:30/6:30c am	Peep and the Big Wide World	PK-K	Science
8/7c am	Sid the Science Kid	PK-K	Science
8:30/7:30c am	Super WHY!	PK-K	Literacy
9/8c am	Pinkalicious & Peterrific	PK-1	The Arts
9:30/8:30c am	Clifford the Big Red Dog	PK-K	Social & Emotional Learning, Literacy
10/9c am	Let's Go Luna!	K-2	Social Studies
10:30/9:30c am	Dinosaur Train	PK-K	Science
11/10c am	The Cat in the Hat Knows a Lot About That!	PK-1	Science & Engineering
11:30/10:30c am	Martha Speaks	K-2	Literacy
12 pm/11c am	Nature Cat	K-3	Science
12:30 pm/11:30c am	Ready Jet Go!	K-2	Science & Engineering
1/12c pm	Arthur	K-2	Social & Emotional Learning
1:30/12:30c pm	Odd Squad	K-2	Math
2/1c pm	Cyberchase	1-5	Math
2:30/1:30c pm	Molly of Denali	K-2	Literacy
3/2c pm	Pinkalicious & Peterrific	PK-1	The Arts
3:30/2:30c pm	Elinor Wonders Why	PK-K	Science & Engineering
4/3c pm	Sesame Street	PK-K	Literacy, Math, Social & Emotional Learning
4:30/3:30c pm	Daniel Tiger's Neighborhood	PK-K	Social & Emotional Learning
5/4c pm	Curious George	PK-K	Math, Science & Engineering
5:30/4:30c pm	Curious George	PK-K	Math, Science & Engineering
6/5c pm	Wild Kratts	K-2	Science
6:30/5:30c pm	Wild Kratts	K-2	Science

Access FREE, at-home learning activities, tips, and more on pbskidsforparents.org



Learn at Home with PBS KIDS

Play and learn anytime and anywhere with free apps from PBS KIDS! Use the chart below to find the app that aligns to your child's grade, learning goal, and favorite PBS KIDS show - then download it on your on your mobile or tablet device to play online, offline, or anytime.

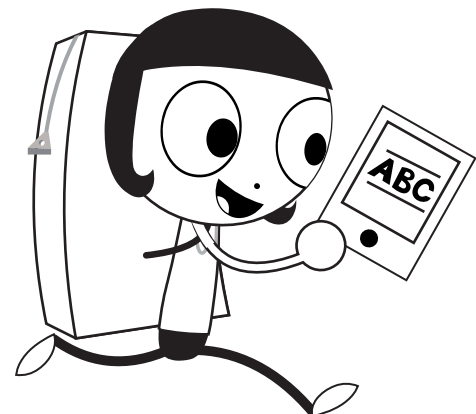
Apps for Social & Emotional Learning

Daniel Tiger for Parents	PK-K	Social & Emotional Learning
PBS KIDS Games app	K-2	Multiple Learning Goals
PBS KIDS Video app	K-2	Multiple Learning Goals



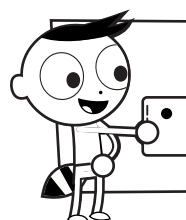
Apps for Literacy Learning

Dinosaur Train A to Z	PK-K	Literacy, Science
Molly of Denali	K-2	Literacy
PBS KIDS Games app	K-2	Multiple Learning Goals
PBS KIDS Video app	K-2	Multiple Learning Goals



Apps for STEM Learning (Science, Technology, Engineering & Math)

PBS Parents Play & Learn	PK-K	Literacy, Math	Ready Jet Go! Space Explorer	K-2	Science
Play & Learn Engineering	PK-K	Science and Engineering	Ready Jet Go! Space Scouts	K-2	Science and Engineering
Play & Learn Science	PK-K	Science	Nature Cat's Great Outdoors	K-3	Science
Splash and Bubbles for Parents	PK-K	Science	PBS KIDS ScratchJr	1-2	Coding
Splash and Bubbles Ocean Adventure	PK-K	Science	Outdoor Family Fun with Plum	1-3	Science and Engineering
The Cat in the Hat Builds That!	PK-K	Science and Engineering	Cyberchase Shape Quest	1-5	Math, Science
The Cat in the Hat Invents	PK-K	Science and Engineering	PBS KIDS Games app	K-2	Multiple Learning Goals
Jet's Bot Builder: Robot Games	K-2	Science and Engineering	PBS KIDS Video app	K-2	Multiple Learning Goals
Photo Stuff with Ruff	K-2	Science			



pbskids.org/apps

